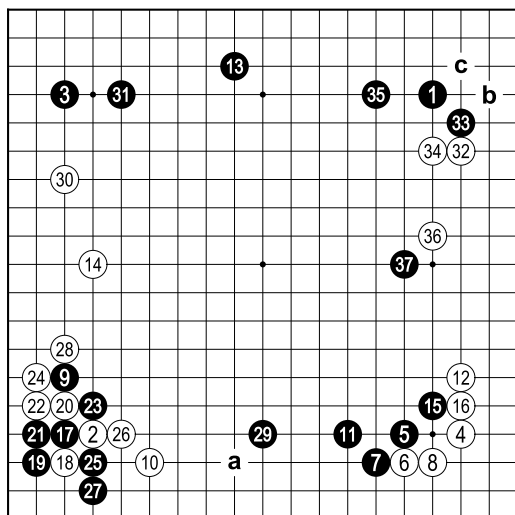


Game Two: AlphaGo v. Lee Sedol

Commentary by Antti Törmänen 1-dan

Black: AlphaGo Lee
White: Lee Sedol 9-dan
Date: 10 March 2016
211 moves. Black wins by resignation.

Figure 1 (1–37)



AlphaGo's novel opening moves

Black 13, with this timing, is novel. In professional go, Black usually plays 'a' instead, followed by white 21 and black 14.

Black 15, forcing white 16, is another novel move. AlphaGo makes this exchange to secure some eye shape for its stones and then goes on to take territorial profit in the lower-left corner with 17.

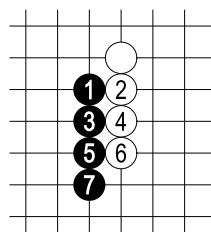
Black 29 bears in mind White's strong group in the lower-left corner and

keeps due distance lest White mount an attack.

Up to white 32 the opening looks fair for both sides.

Black 33. The diagonal attachment is usually best used for attacking the opponent's stone, preventing it from making the eye-creating slide of 'b'. In this game it looks as if Black is only helping White into stronger shape on the right side; the corner cannot yet be called black territory because of the possible white invasion at 'c'.

Black 37 is one of the highlights of the five-game match. Playing a shoulder hit against a fourth-line stone used to be unthinkable for professional players.



Dia. 1: fifth-line shoulder hit

Dia. 1. In response to black 1, if White simply defends with 2–6, the territory White builds on the side locally outweighs the black centre influence.

Black 15, 33 and 37 all share the same plan: Black never intended to enter the right side in the first place. Instead, Black plays forcing moves from the